

Introducing



kallima
box™



Into the fold

Introducing Kallima's all-new **Folding Grade**, our foldable, printable, boxable solution for packaging, cartons, POP displays and more.

Hold up, stand out

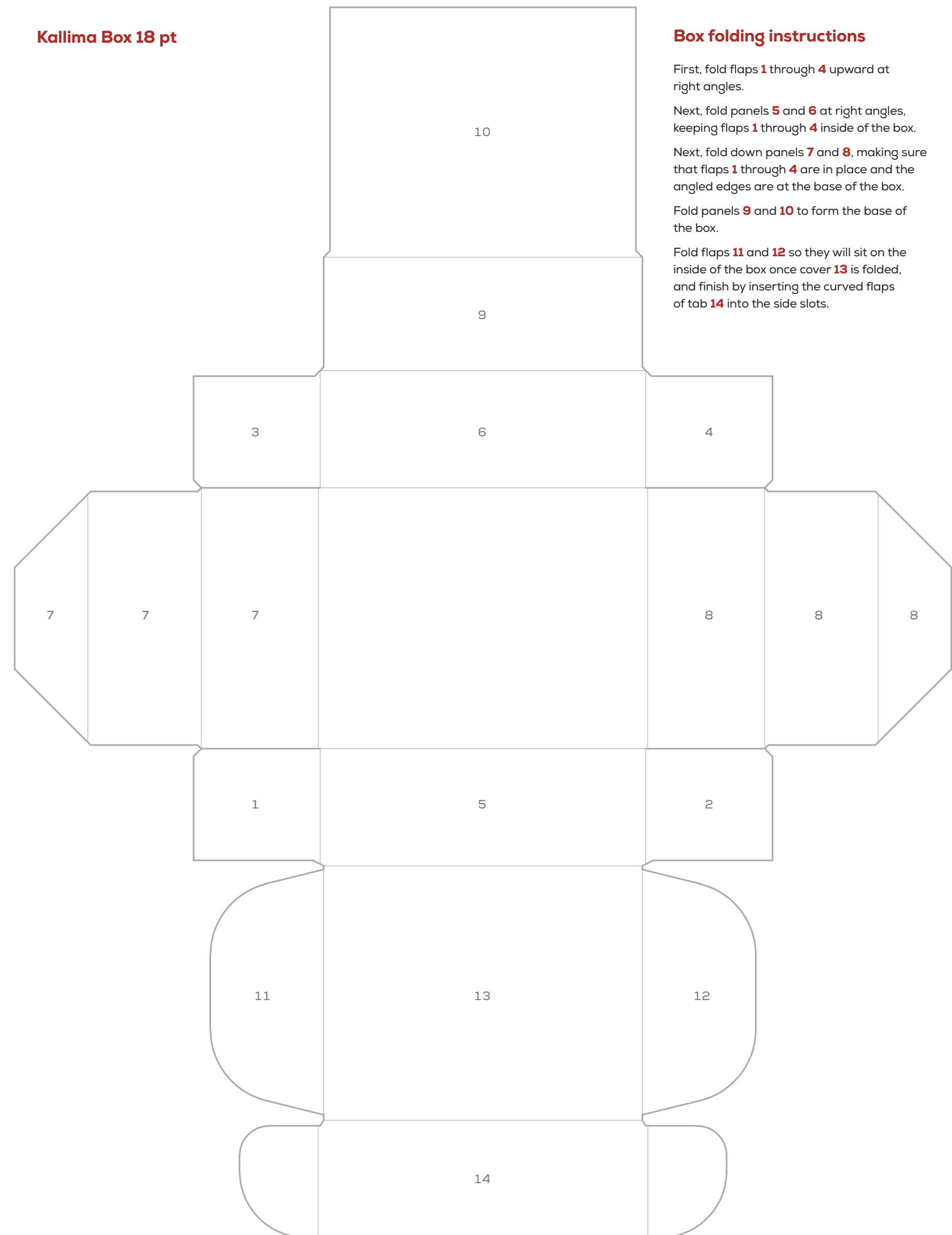
The strength and versatility you've come to expect from Kallima, with the brightness and pliability you'll need to stand out in the marketplace.

- Coated one side
- Available in 16 pt and 18 pt
- Consistent printability and reliable runnability on press
- Available in sheets and rolls
- FDA-compliant for dry food contact
- FSC-certified*
- Basis weight advantage

* Available upon request
Contact your representative for more information

Printed on Kallima Box 18 pt in 4 colour process on a digital press, with the addition of a spot gloss UV-cured varnish on the coated side of the paper and a clear stamping on the uncoated side.

Kallima Box 18 pt



Box folding instructions

First, fold flaps **1** through **4** upward at right angles.

Next, fold panels **5** and **6** at right angles, keeping flaps **1** through **4** inside of the box.

Next, fold down panels **7** and **8**, making sure that flaps **1** through **4** are in place and the angled edges are at the base of the box.

Fold panels **9** and **10** to form the base of the box.

Fold flaps **11** and **12** so they will sit on the inside of the box once cover **13** is folded, and finish by inserting the curved flaps of tab **14** into the side slots.



Kallima Box 18 pt

1 800 411-7011
samples.paperboard@rayonieram.com
kallimapaper.com

